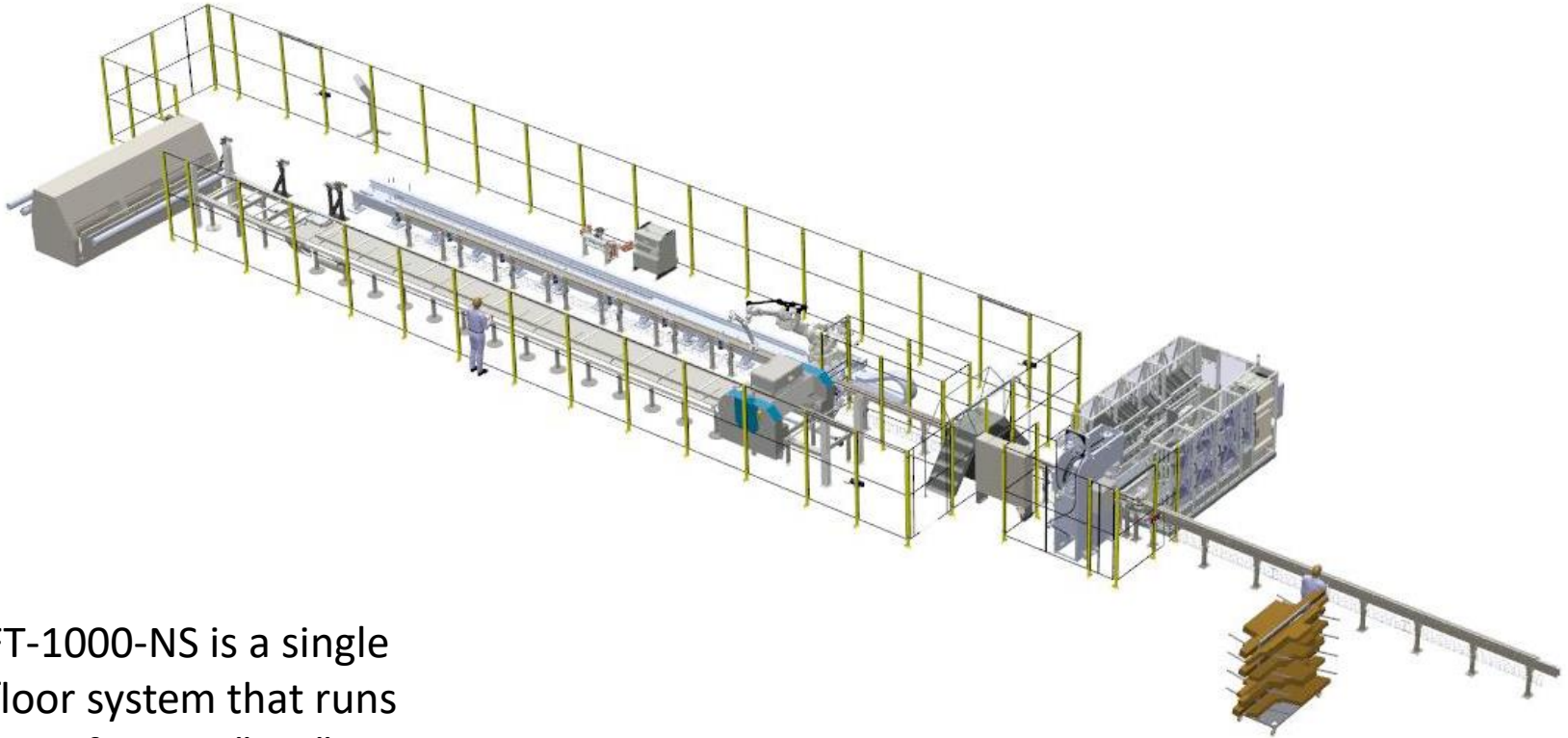
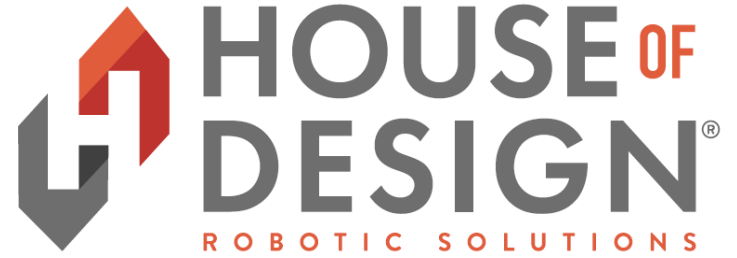
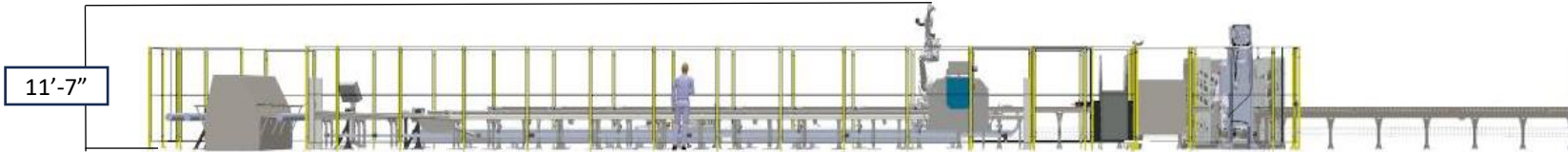
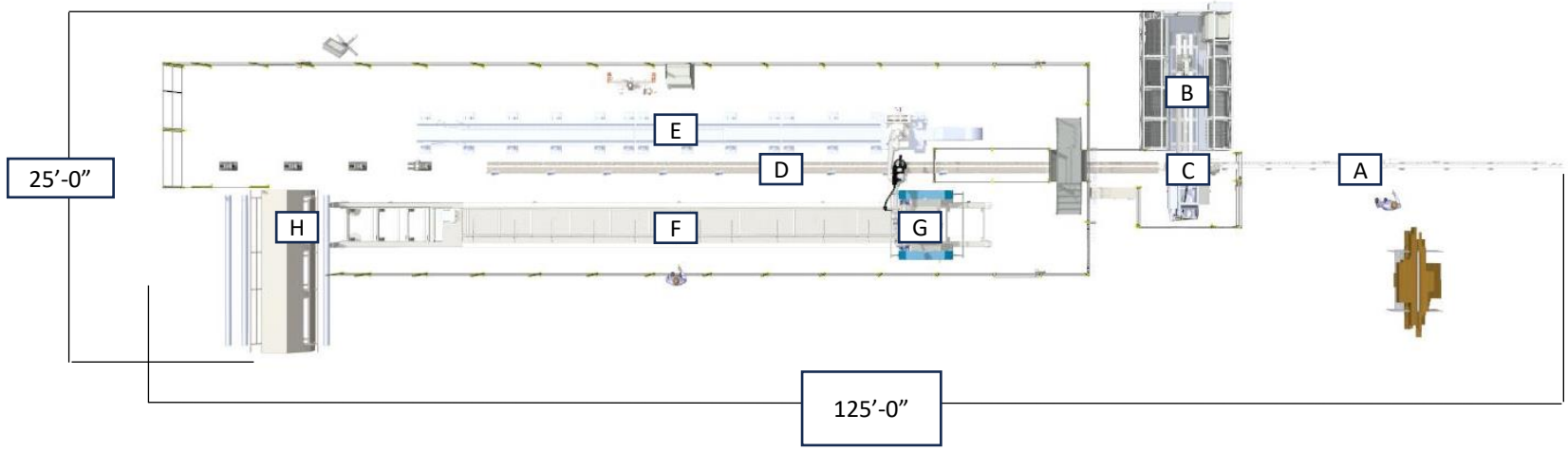


SFT-1000-NS



The SFT-1000-NS is a single table floor system that runs a 40' truss from 12"-24". It is operated by 2 employees.



Area	Part	Qty	Description
Infeed	A	1	Infeed Conveyor
Pre-Plate	B	1	Nail plate System with 65 Magazines
	C	1	Nail Plate Press
Assembly Area	D	1	Wood Transfer Conveyor
	E	1	Robot With End of Arm Tool on Track
	F	1	40' Automated Table
	G	1	Table Gantry
	H	1	Finish Roller